



Designed in **detail** to meet your needs.

When it comes to wide format scanners, it's the details that make the difference. With productivity-boosting operation, superior image quality, and the ability to handle any job effortlessly, the HD Ultra gets every detail right. It comes in two models: the HD Ultra Professional for high-volume, high-productivity work, and the HD Ultra Office for occasional scanning. A space-saving MFP version is also available.



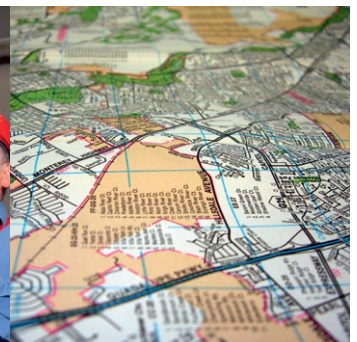
They'll win the race—
but only by working
together in perfect
synchronization

To create a productivity powerhouse,
it takes a team that knows how to
get every **detail** right.



HD Ultra Professional
Ultimate productivity for
even the highest-volume
applications.

HD Ultra Office
The perfect balance
between productivity
and ease of use.



No more workflow bottlenecks

Time is money, and the wrong wide format scanner can waste time by creating bottlenecks in your scanning, document management and other workflows. That's why the HD Ultra is designed from the ground up to prevent bottlenecks and accelerate workflows. It works when you need it to. It gets things right on the first try. And the Professional model is the fastest wide format scanner on the market. Period.

Don't have a wide format scanner to begin with? Then the HD Ultra will eliminate one of the biggest bottlenecks you face – the need to send large documents out of house for scanning.

Up to 100% faster

Speed is important for any scanning application, but especially for high-volume scanning such as scan-to-file digital archiving. Thanks to xDTR2 technology and Gigabit Ethernet, the HD Ultra delivers maximum throughput, running up to twice as fast as our previous generation and other scanners on the market. The extra speed enables your operators to work more productively, saving you time and money.

Designed in detail to boost productivity

xDTR2



Our xDTR2 (extended data transfer rate) technology accelerates real-world performance. Multiple speed enhancement features work together to enable twice as many scanned documents per day than other scanners can deliver – regardless of "inch per second" performance.

Gigabit Ethernet



Delivering 3 times the bandwidth of USB2, our unique Gigabit Ethernet implementation is lightning fast and accelerates workflows even further via network sharing, where scans can be controlled from any computer.

Easier for everyone to use

To really help boost productivity a scanner needs to be easy to use – not just for experienced operators, but for anyone who needs to step in and scan a document without having to read manuals or learn to use complicated controls.

The HD Ultra comes with a host of features that make operation quick and intuitive. From one-touch control and fail-safe paper loading to optical sensors for SnapSize setup, these features all add up to time-savings you'll notice on your bottom line.

Get it right the first time

Nothing takes a greater toll on productivity than having to rescan documents because of errors and quality problems. Every detail of the HD Ultra has been designed to make sure you get the right scan the first time around.

And of course you get all the rock-solid reliability you'd expect from a Contex scanner. The HD Ultra is built to eliminate unscheduled downtime and costly production stops day after day, year after year.

SnapSize



SnapSize makes it faster and easier to switch between different-sized documents by eliminating the need for manual software adjustments. Precision optical paper sensors register your document size and adjust the required settings automatically.

FlexFeed



With removable, no-rewind paper return guides, right-side loading, a funnel-shaped feeder, and a convenient new exit tray, FlexFeed takes the hassle out of scanning any document, even up to 44" wide.



Boost productivity

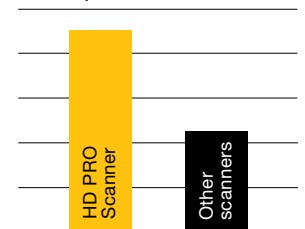


Intelligent paper return does away with paper rewinding



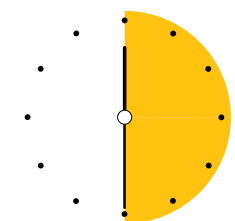
Programmable one-touch buttons let you customize your workflow

of docs pr. hour



Scan more per day

The HD Ultra scans twice as many documents per hour as comparable scanners from other brands do.



2 days of work in 1

Combined, the productivity gains the HD Ultra delivers let you get two days of work done in a single day.

Sometimes, the whole point is complexity



With superior image quality, you'll capture every **detail**, in any document you scan.



HD Ultra Professional
The highest image quality available in a wide format scanner. Period.

HD Ultra Office
Capture all the details and easily share with other teams on the project.



Image quality beyond resolution

Colors, depth, textures, emotion. There's a lot more to image quality than just resolution. That's why the HD Ultra uses CCD imaging, augmented with our own patented ALE and AccuColor enhancement algorithms.

What does it mean for you? If you scan fine art or posters, your scans will preserve all the rich visual and emotional power of the original. If you work with maps, drawings or other technical documents, you'll be sure to capture and preserve the valuable information you need, no matter how faint or subtle.

No need to rescan

Besides ensuring the faithful capture of visual information, superior image quality also impacts on productivity. The need to spend time rescanning work often stems from quality problems the first time around.

Thanks to patented algorithms that automatically analyze your documents, clean up background thresholds and handle other enhancement work

during the scanning process, the HD Ultra delivers quality immediately, saving valuable time.

Capture and edit

If you scan technical drawings, blueprints, maps or other documents you might want to edit digitally, the quality of your scan can make a serious difference. With cleaner backgrounds and better overall quality to start with, you'll have less time-consuming enhancement work to do in the editing stage.

The HD Ultra is built for our Nextimage image enhancement solution, a complete set of tools for ensuring quality of archived and printed scans.

Discover details you didn't know were there

Older documents – especially folded, worn or damaged ones – sometimes hide valuable information from the naked eye. HD Ultra image quality and Nextimage enhancement software brings lost details to light, and maybe even change the way you understand the document you're working with.

Designed in detail for perfect image quality

ALE



ALE stands for "accuracy lens enhancement," and is a technology that corrects spherical errors in CCD-based scanners. The result is improved accuracy, which is especially important for GIS specialists and others involved in quality assurance and verification.

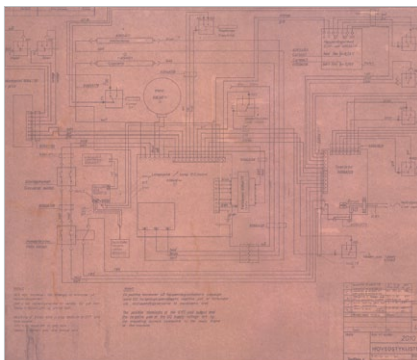
AccuColor



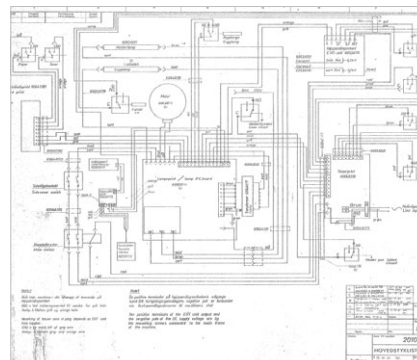
To get the best results, your scanner and software should work with full 48-bit data. Where other scanners ignore some of this data, the HD Ultra is the world's wide format scanner with true 48-bit color capture.

Adaptive threshold ensures effective cleanups

Before cleanup



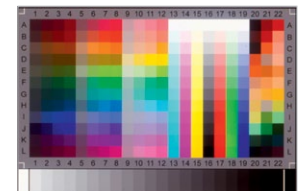
After cleanup



Enhance image quality



Nextimage capture and enhancement software



Color calibration chart for accurate calibration

“The HD Ultra gave the quality of my art reproductions a huge lift. You can see the difference instantly.”

—Repro shop owner



Wear and tear, folds
and wrinkles? Go
ahead - bring 'em on!

The HD Ultra finds valuable
details you might not have
known were there.



HD Ultra Professional
Versatility plus productivity
equals ultimate output – in
file or print.

HD Ultra Office
Automated technologies
deliver unmatched ease of
use and sharing.



Scan any document

The biggest challenge for many scanners is “difficult” documents, with their creases, folds, wear and tear. Not only can these documents be hard to feed into a scanner, they often “hide” important details in folds and shadows.

Thanks to FlexFeed and FlexDoc technology, the HD Ultra accepts and easily adjusts to any document, no matter what its thickness or condition. Even documents printed on card are easy to insert into the rounded entrance section.

Intelligent size detection

The HD Ultra doesn’t just accept difficult documents. It automatically senses the challenges and adjusts to them – saving time and ensuring a clean, accurate scan every time.

SnapSize, our optical sensor technology, registers any standard-sized document as you feed the paper into the scanner, and then automatically optimizes the scanner’s setup for that particular document.

Integrates perfectly

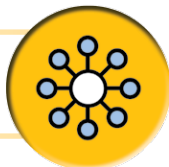
Another feature that makes the HD Ultra so versatile is SmartShare. A Gigabit Ethernet port lets you connect your scanner to your LAN, so that any computer in your workgroup can control the scanner. SmartShare enables more flexible workflows by allowing anyone to scan from their own desk, and it eliminates the bottlenecks that can form when a scanner is tied to a single computer. Custom print drivers mean you can easily print to most large-format printers.

Easy for anyone to use

Ultimately, a versatile scanner has to be a scanner that anyone can operate. With automatic adjustment for skewed documents, intuitive one-touch control, FlexFeed and FlexDoc paper handling, and the ability to get it right on the first try, the HD Ultra is everyone’s scanner. Right from day one, right from their own desk.

Designed in detail for greater versatility

SmartShare



This allows all users in a workgroup to operate the scanner from their own computer via Ethernet. Workgroups become more efficient.

FlexFeed



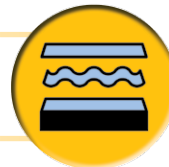
With removable, no-rewind paper return guides, right-side loading, a funnel-shaped feeder, and a convenient new exit tray, FlexFeed takes the hassle out of scanning any document, even up to 44” wide.

SnapSize



SnapSize makes it faster and easier to switch between different-sized documents by eliminating the need for manual software adjustments. Precision optical paper sensors register your document size and adjust the required settings automatically.

FlexDoc



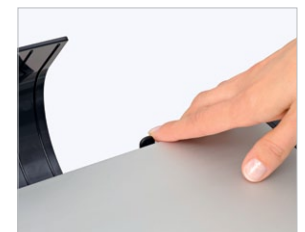
Combining automatic thickness adjustment control (ATAC), all wheel drive (AWD), automatic contour correction and a new paper pressure adjustment, FlexDoc enables you to scan anything from newspaper-thin documents to posters on foam boards, gator boards and other bulky documents up to 0.6” thick.



Handle any document



Fail-proof funnel-shaped paper feed



Paper pressure adjustment slider

“FlexDoc and FlexFeed make it easy for all our employees to scan anything. SmartShare has accelerated our workflow by making it easier to distribute materials.”

—Office manager

About Contex

As the world's largest developer and producer of wide format imaging solutions, Contex leads the market with innovative technology and advanced scan and copy software solutions. Sold worldwide in over 80 countries, Contex solutions are recognized in a wide range of industries for reliability, value, high performance, and superb image quality.

As the global leader, we are always striving to deliver excellent service, superior products and great value to our partners and customers.

Looking Ahead

Contex's research and development work and dedication to our customers have made us a leader in the large format scanning industry, and we will continue to devote ourselves to R&D and market growth in the years to come.

We are confident in our work and our ability to establish strong, enduring relationships with our customers and partners well into the future.

Product range

HDULTRASERIES



– ultimate image quality
Boost productivity and get the ultimate in image quality. Encompassing the latest technologies, the versatile HD Ultra keeps your business running at full capacity.

SDSERIES



– your office workhorse
Scan, copy and share wide-format maps and drawings, with this reliable, easy-to-use office scanner.

XD SERIES



– affordable and portable
A durable, yet lightweight design makes the XD Series ideal for projects on the move, while still handling up to D or A1-sized documents.

MFP SERIES



– turn printers into copiers
Based on our HD Ultra, SD, or XD scanners, these space-saving, plug-and-play solutions come with touch-enabled screen and software for ease of use.

NEXTIMAGE

You can copy, print, email, edit, and scan with Nextimage multi-function wide format software. Just one user-friendly interface, creating the perfect link between your scanner, digital storage, existing software, and printers.

ISIS and TWAIN Drivers

The Contex ISIS driver lets you scan large format documents directly into your electronic document/content management workflow.

TWAIN lets you import images into your other software applications, including Adobe Photoshop, Microsoft Office, Autodesk and EDM solutions.

Industries

We know that requirements vary depending on the types of documents you work with, so we've made sure you can find the right combination of speed, resolution and operational simplicity in our range of solutions, including scan-to-file, scan-to-print and multi-function capabilities. Contex solutions are ideal for processing CAD drawings, plans, blueprints, maps, posters, artwork and many other types of documents.

Technical documents

- Government
- Architecture
- Engineering
- Construction
- Manufacturing
- Utilities

GIS & mapping documents

- Civil Engineering
- Surveying
- Facility management
- Natural Resources
- Utilities
- Government

Graphic documents

- Graphic Arts
- Photography
- Publishing
- Signs

All document types

- Copy Shop
- Reprographics
- Printing and Document Services

Other documents

No matter what it is – textile patterns, legal documents or other specialized media – our solutions handle them with care and create perfect reproductions.

Locations

EMEA & AP Branch Office

Contex A/S
2 Svanevang
DK-3450 Allerød
Denmark
Phone: +45 4814 1122
Fax: +45 4814 0122
emea-ap@contex.com

Americas Branch Office

Contex Americas Inc.
365 Herndon Parkway, Suite 105
Herndon, VA 20170
USA
Toll Free: +877-226-6839
(877-2-CONTEX)
Phone: +1 (703) 964 9850
Fax: +1 (703) 547 3375
SalesAmericas@contex.com

China Branch Office

Contex A/S Shanghai
30G, No. 1 Ruijin Road (S.)
200023 Shanghai
China
Phone: +86 21 6422 2525
Fax: +86 21 5496 0724
info-china@contex.com

Japan Branch Office

Contex
Scanning Technology Japan A/S
1-10-2F Nihonbashi Kabuto-Cho,
Chuo-Ku 103-0026 Tokyo
Japan
Phone: +81 3 3669 5515
Fax: +81 3 3669 5516
info-japan@contex.com

Head Office

Contex A/S
2 Svanevang
DK-3450 Allerød
Denmark
Phone: +45 4814 1122
Fax: +45 4814 0122
info@contex.com

www.contex.com

