



HP Designjet T1120 HD-MFP

A trusted choice for demanding professionals



Fast, versatile HP MFP for professional results

Superior copy, scan, and print results

- **Professional prints.** HP Vivera inks with the Three-black ink set produce a wide range of colors and fine detail.
- **Get the highest level of quality**—from line drawings to maps to posters—with CCD scanning technology and embedded PS.
- **Scan and archive older**—including previously folded—documents and save space.
- **Fast-drying, smudge-resistant prints.** HP Vivera inks are designed together with a range of Original HP printing materials.
- **Create stunning large-format posters that convey your message loud and clear.** For a 3 month trial period you can use the optional Serif PosterDesigner Pro for HP⁽¹⁾ with this MFP.

Performs 3 functions in 1—quickly and effectively

- **Print and scan quickly—so you're back to work fast.** Scan color documents at speeds up to 2 in (5.1 cm) per second (400 dpi Turbo mode) and black-and-white documents at up to 6 in (15.2 cm) per second (400 dpi Turbo mode). Print D (A1)-sized documents in just up to 35 seconds per page.⁽²⁾
- **Batch scanning and printing is fast and easy with this MFP.** Printing PLT, PPT, and PDF files is fast and easy, especially with HP Instant Printing Utility 2.0, which enables single-click printing of large-format CAD/GIS output. This MFP also includes collating and nesting features even when copying.

- **Print with confidence,** knowing that prints with high levels of detail are not going to cause problems thanks to in-printer processing, including an 80 GB HDD and embedded PS.
- **Assume greater control over this MFP**—and all copy, scan, and print functions—with a range of effective management tools via the printer's embedded Web server and the accounting feature in the scanner.
- **Copy documents directly to most other HP Designjet printers thanks to preconfigured drivers in the scanner.**

Do more with a unique integrated HP solution

- **Convenient single-vendor solution—built together to work together.** Bi-directional capabilities between the printer and scanner provide built-in intelligence, enabling you to get basic printer-status information and access the printer queue.
- **Save valuable workspace with a single, integrated multifunction solution.** The HP Designjet T1120 HD-MFP is just that solution with printer, scanner, touchscreen display, keyboard, and software all bundled into one device.
- **Quickly adapt to customer changes and demands with real time preview and retouch software.** Adjust and retouch the color in scanned documents with this MFP's color management tools, including a background cleaning option.

(1) Serif PosterDesigner Pro for HP is an optional feature. Not included, sold separately.

(2) Mechanical printing time on plain media in Fast mode with Economode on.

For GIS, Enterprise, and Copy shops	Print in 35s/D	6 colors	80 GB hard disk	Embedded PostScript®	CCD Scanning technology	Scan in 2ips color, 6ips b&w	Advanced color management options
-------------------------------------	----------------	----------	-----------------	----------------------	-------------------------	------------------------------	-----------------------------------

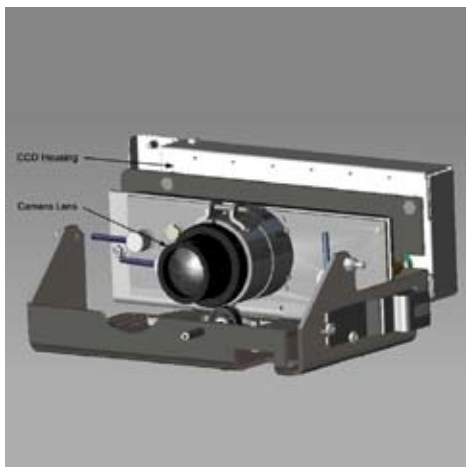
HP Designjet T1120 HD-MFP

1. Scanning speed of 2 in (5.1 cm) per second for color and 6 in (15.2 cm) per second for mono originals (400 dpi Turbo)
2. Print D (A1)-sized documents in up to 35 seconds per page
3. 15" touchscreen graphical display for easy, intuitive operation
4. Fast, real time preview enables greater control over final output
5. DVD/CD reader/writer to save files directly to disc
6. Built-in fast image processing for excellent copy and scan performance
7. Intuitive software provides easy-to-use scanning, copying, and network printing
8. The integrated product design saves workspace
9. Print output basket for high volume batch jobs
10. High scanning quality and speeds, excellent 3D scanning capability



vivera
HP INKS

- Accurate color
- Dark blacks
- True neutral grays
- Smooth area fills
- Subtle contrasts, from the most vivid color to the softest tones



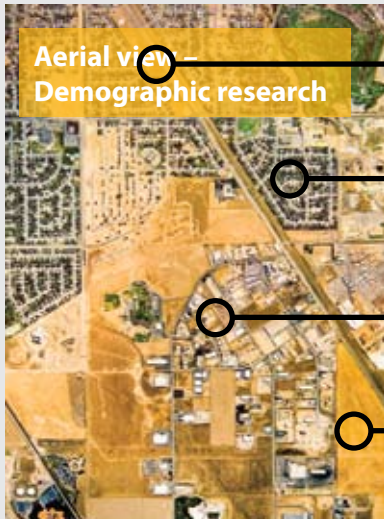
Triple 4-linear CCDs camera scanning technology

- Superior scanning quality: Color CCD technology includes three digital cameras with four arrays with RGB filters that separate color components and panchromatic BW filter to ensure superior quality on grayscale
- High application versatility
- Better results with previously folded paper
- Lower maintenance costs: modular technology, many customer-replaceable parts
- Can reach high scanning speeds thanks to powerful illumination and processing capabilities
- More tolerant to dust

A trusted choice for demanding professionals

Printing

Achieve professional prints—a wide range of color and fine details



1. Crisp text
2. Neutral grays and deep blacks
3. Uniform lines and fine detail
4. Accurate color

Copying

See impressive accuracy for any kind of original

Settings specially optimized for:

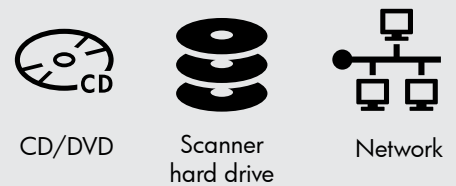
- CAD
- Map
- Brochure (line and text)
- Photo



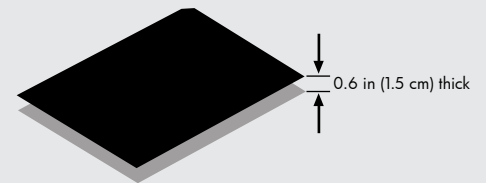
Improved quality for damaged documents thanks to the background cleaning feature

Scanning

Scan to many different locations



Scan original up to 0.6 in (1.5 cm) thick



Scan to many industry standard formats



Intuitive Software



Touchscreen fast preview ensure greater control over final output

AFTER

BEFORE



Fast real time preview

Control section

Toolbar

The HP Designjet T1120 HD-MFP is designed specifically for GIS customers, enterprise environments, and copy shops requiring superior quality and advanced copy, scanning, performance, and manageability features—all from one integrated device.

HP Designjet T1120 HD-MFP

Technical specifications

Print	
Print speed ³	Line drawings: 35 sec D/A1 on plain media in Fast Economy mode, 56 D/A1 per hour on plain media in Fast mode; Color images: 445 ft ² /hr (41 m ² /hr) on coated media in Fast mode, 30 ft ² /hr (2.8 m ² /hr) on glossy media in Best mode
Print resolution	Up to 2400 x 1200 optimized dpi
Margins (top x bottom x left x right)	Roll: 0.2 x 0.2 x 0.2 x 0.2 in (5 x 5 x 5 mm) (borderless on photo papers) Sheet: 0.2 x 0.67 x 0.2 x 0.2 in (5 x 16.75 x 5 x 5 mm)
Technology	HP Thermal Inkjet
Ink cartridge colors	Cyan, gray, magenta, matte black, photo black, yellow
Ink types	Dye-based (cyan, magenta, yellow, gray, photo black); pigment-based (matte black)
Ink drop	6 pl (cyan, magenta, photo black, gray), 9 pl (yellow, matte black)
Ink cartridge size	69-ml (photo black, cyan, magenta, yellow, gray) 130-ml (matte black, photo black, cyan, magenta, yellow, gray)
Line Accuracy	+/-0.1% ⁴
Line width	Minimum line width (HP-GL/2 addressable): 0.0007 in (0.02 mm) Guaranteed minimum line thickness (ISO/IEC 13660:2001(E))*: 0.0023 in (0.06 mm)
Scan	
Scan speed	Color (200 dpi/400 dpi Turbo): 2 in/sec (5.1 cm/sec) Black-and-white (200 dpi/400 dpi Turbo): 6 in/sec (15.2 cm/sec)
Scan/copy resolution	Enhanced mode: 9600 x 9600 dpi with variable resolution settings from 50 dpi in increments of 1 dpi Best mode: color and black-and-white: 300 x 300 dpi Normal mode: color and black-and-white: 200 x 200 dpi Draft mode: color and black-and-white: 150 x 150 dpi
Maximum scan width	42 in (1067 mm)
Maximum scan thickness	0.6 in (15 mm)
Copy	
Reduction/enlargement	1 to 10000%
Maximum copies	1000 copies
Copier settings	Type of original, image crop and align preview, lightness, saturation and RGB controls, sharpen/blur, mirror copy, enlarge/reduce, paneling, tiling, nesting, accounting, batch
Media handling	
	Printer: Roll feed, sheet feed, automatic cutter Scanner: Sheet feed
Media types	
	Printer: bond and coated paper (bond, coated, heavyweight coated, super heavyweight plus matte, colored), technical paper (natural tracing, translucent bond, vellum), film (clear, matte, polyester), photographic paper (satin, gloss, semi-gloss, matte, high-gloss), backlit, self-adhesive (two-view cling, indoor paper, polypropylene, vinyl) Scanner: Non-abrasive paper, vellum, mylar, sepia, blueprints, plastic film, plastic laminate, foam board, cardboard. (No plywood, stone plates, metal plates or abrasive, dirty, rough, sharp edged, metal clamped, burned surfaces, transparencies.)
Processing and memory	
	Printer: Intel® Centrino® mobile 600 MHz, 384 MB memory, 80 GB hard disk Scanner: Intel Pentium® 4 2.8 GHz, 1 GB memory, 40 GB hard disk
Connectivity	
Interfaces (standard)	Printer: 1 Gigabit Ethernet (1000Base-T) port, 1 Hi-Speed USB 2.0 certified port, 1 EIO Jetdirect accessory slot Scanner: 1 Gigabit Ethernet (1000Base-T) port, 1 FireWire® (IEEE-1394a compliant) port
Print languages	Adobe® PostScript® 3™, Adobe PDF 1.6, HP-GL/2, HP-RTL, CALS G4, TIFF, JPEG, HP PCL 3 GUI
Drivers (included)	HP-GL/2, HP-RTL, PostScript drivers for Windows® (optimized for AutoCAD 2000 and higher); HP PCL 3 GUI, PostScript drivers for Mac OS X 10.4/10.5; support for Citrix XenApp and Citrix XenServer environments

(3) Mechanical printing time

(4) ±0.1% of the specified vector length or ±0.1 mm (whichever greater) at 73° F (23° C), 50-60% relative humidity, on E/A0 printing material in Best or Normal mode with HP Matte Film

Environmental ranges

Operating temperature	41 to 104° F (5 to 40° C)
Recommended operating temperature	64 to 90° F (18 to 32° C) (depending on paper type)
Storage temperature	-4 to 131° F (-20 to 55° C)
Operating humidity	20 to 80% RH

Acoustic

Sound pressure, active	55 dB(A)
Sound pressure, standby	42 dB(A)
Sound power, active	6.9 B(A)
Sound power, standby	5.8 B(A)

Power consumption

Maximum	330 watts
Powersave	44.4 watts
Off	1.69 watts
Power requirements	Input voltage (auto ranging): 100 to 240 VAC (+/- 10%), 50/60 Hz (+/- 3 Hz), 2 A max

Certification

Safety	USA and Canada (CSA certified), EU (LVD and EN60950-1 compliant), Russia (GOST), Singapore (P5B), China (CCC), Argentina (IRAM), Mexico (NYCE), Korea (KETT)
Electromagnetic	Compliance for Class A ITE products: EU (EMC Directive), USA (FCC Rules), Canada (ICES), Australia (ACA), New Zealand (MoC), China (CCC), Japan (VCCI); Certified as Class A product: Korea (MIC), Taiwan (BSMI)
Environmental	EU & China RoHS, WEEE, REACH, EuP

Warranty

One-year limited hardware warranty

HP Care Pack Services

UH467E	HP 3-Year Next Business Day Onsite Service
H4518E	HP Installation Services with Network Setup
UH470E	HP 3-Year Same Day Onsite Service (9x5)
UH473E	HP 3-Year Same Day Onsite Service (13x5)

Dimensions (w x d x h)

MFP	74.8 x 39.4 x 63.0 in (1900 x 1000 x 1600 mm)
Shipping	77.6 x 31.1 x 57.1 in (1970 x 790 x 1450 mm)

Weight

MFP	440 lb (200 kg)
Shipping	612 lb (278 kg)

What's in the box

Printer, printheads (3 x 2 colors each), introductory ink cartridges, 44-in stand, quick reference guide, setup poster, Serif PosterDesigner Pro poster, start-up software, scanner, touchscreen (panel PC), keyboard, scanner documentation CD, system recovery DVD, customer service guide, USB cable, FireWire cable, Ethernet cable, power cords

Ordering information

Product CK841A	HP Designjet T1120 HD-MFP
--------------------------	---------------------------

Accessories

Q6709A	HP Designjet T11x0/T610 44-in Spindle
J7997G	HP Jetdirect 630n IPv6 Gigabit Print Server
J7961G	HP Jetdirect 635n IPv6/IPsec Print Server
CN088A	Serif PosterDesigner Pro for HP

Original HP printheads

C9380A	HP 72 Gray and Photo Black Printhead
C9383A	HP 72 Magenta and Cyan Printhead
C9384A	HP 72 Matte Black and Yellow Printhead

Original HP ink cartridges with HP Vivera inks

C9397A	HP 72 69-ml Photo Black Ink Cartridge
C9398A	HP 72 69-ml Cyan Ink Cartridge
C9399A	HP 72 69-ml Magenta Ink Cartridge
C9400A	HP 72 69-ml Yellow Ink Cartridge
C9401A	HP 72 69-ml Gray Ink Cartridge
C9403A	HP 72 130-ml Matte Black Ink Cartridge
C9370A	HP 72 130-ml Photo Black Ink Cartridge
C9371A	HP 72 130-ml Cyan Ink Cartridge
C9372A	HP 72 130-ml Magenta Ink Cartridge
C9373A	HP 72 130-ml Yellow Ink Cartridge
C9374A	HP 72 130-ml Gray Ink Cartridge

Original HP large-format printing materials

Q6627A	HP Super Heavyweight Plus Matte Paper 210 g/m ² , 36 in. x 100 ft/914 mm x 30.5 m
Q6628A	HP Super Heavyweight Plus Matte Paper 210 g/m ² , 42 in. x 100 ft/1067 mm x 30.5 m
C6030C	HP Heavyweight Coated Paper 131 g/m ² , 36 in. x 100 ft/914 mm x 30.5 m
C6569C	HP Heavyweight Coated Paper 131 g/m ² , 42 in. x 100 ft/1067 mm x 30.5 m
Q1956A	HP Heavyweight Coated Paper 131 g/m ² , 42 in. x 225 ft/1067 mm x 67.5 m
C6019B	HP Coated Paper 90 g/m ² , 24 in. x 150 ft/610 mm x 45.7 m
C6020B	HP Coated Paper 90 g/m ² , 36 in. x 150 ft/914 mm x 45.7 m
C6980A	HP Coated Paper 90 g/m ² , 36 in. x 300 ft/914 mm x 91.4 m
C1860A	HP Bright White Inkjet Paper 90 g/m ² , 24 in. x 150 ft/610 mm x 45.7 m
C1861A	HP Bright White Inkjet Paper 90 g/m ² , 36 in. x 150 ft/914 mm x 45.7 m
C6810A	HP Bright White Inkjet Paper 90 g/m ² , 36 in. x 300 ft/914 mm x 91.4 m
Q1397A	HP Universal Bond Paper 80 g/m ² , 36 in. x 150 ft/914 mm x 45.7 m
C3868A	HP Natural Tracing Paper 90 g/m ² , 36 in. x 150 ft/914 mm x 45.7 m
C3875A	HP Clear Film 174 g/m ² , 36 in. x 75 ft/914 mm x 22.9 m
51642B	HP Matte Film 160 g/m ² , 36 in. x 125 ft/914 mm x 38.1 m
Q1427A	HP Universal High-gloss Photo Paper 190 g/m ² , 36 in. x 100 ft/914 mm x 30.5 m
Q1421A	HP Universal Semi-gloss Photo Paper 190 g/m ² , 36 in. x 100 ft/914 mm x 30.5 m
CG459A	HP Premium Matte Photo Paper 210 g/m ² , 24 in. x 100 ft/610 mm x 30.5 m
CG460A	HP Premium Matte Photo Paper 210 g/m ² , 36 in. x 100 ft/914 mm x 30.5 m
C7960A	HP Reverse Print Matte Backlit Film 160 g/m ² , 36 in. x 75 ft/914 mm x 22.9 m
Q8834A	HP Self-adhesive Gloss Polypropylene 120 g/m ² , 36 in. x 75 ft/914 mm x 22.9 m
C8886A	HP Coated-free Heavyweight Coated Paper 170 g/m ² , 24 in. x 100 ft/610 mm x 30.5 m
C8887A	HP Coated-free Heavyweight Coated Paper 170 g/m ² , 36 in. x 100 ft/914 mm x 30.5 m
C8888A	HP Coated-free Heavyweight Coated Paper 170 g/m ² , 42 in. x 100 ft/1067 mm x 30.5 m
C8883A	HP Coated-free Coated Paper 100 g/m ² , 24 in. x 150 ft/610 mm x 45.7 m
C8884A	HP Coated-free Coated Paper 100 g/m ² , 36 in. x 150 ft/914 mm x 45.7 m
C8885A	HP Coated-free Coated Paper 100 g/m ² , 42 in. x 150 ft/1067 mm x 45.7 m
C8889A	HP Recycled Bond Paper 80 g/m ² , 24 in. x 150 ft/610 mm x 45.7 m
C8890A	HP Recycled Bond Paper 80 g/m ² , 36 in. x 150 ft/914 mm x 45.7 m
C8891A	HP Recycled Bond Paper 80 g/m ² , 42 in. x 150 ft/1067 mm x 45.7 m
C8892A	HP Recycled Bond Paper 80 g/m ² , (A2) 16.54 in. x 150 ft/420 mm x 45.7 m

More HP large-format printing material sizes and weights available at:

www.hp.com/go/designjet/supplies



© Copyright 2007, 2009 Hewlett-Packard Development Company, L.P. The information contained herein is subject to change without notice. The only warranties for HP products and services are set forth in the express warranty statements accompanying such products and services. Nothing herein should be construed as constituting an additional warranty. HP shall not be liable for technical or editorial errors or omissions contained herein. Intel, Pentium, and Intel Centrino are trademarks of Intel Corporation in the U.S. and other countries. Windows is a U.S. registered trademark of Microsoft Corporation. FireWire is a trademark of Apple Computer, Inc., registered in the U.S. and other countries. Adobe, PostScript, and Adobe PostScript 3 are trademarks of Adobe Systems Incorporated.

For more information, visit our website at:

www.hp.com/go/designjetT1120HD-MFP

